

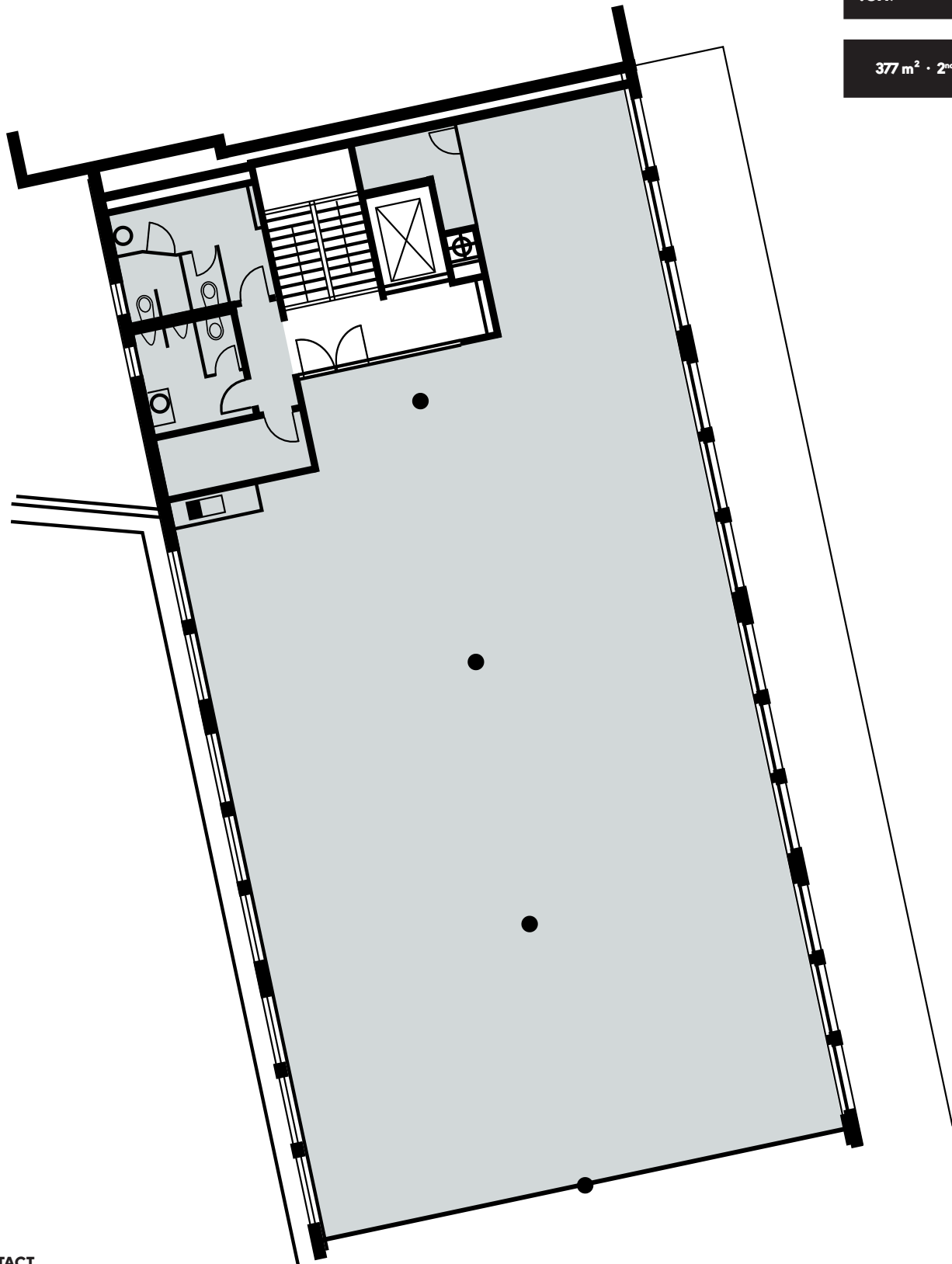
Bahnhofstrasse 17, 2502 Biel

Floor plan - 2nd floor

New-
Office

.ch/

377 m² · 2nd floor



CONTACT



BDO AG

Marco Nicoli
Biberstrasse 16
4500 Solothurn

Phone +41 32 624 67 62

Mail marco.nicoli@bdo.ch

Changes and deviations from the published information and the building specifications are expressly reserved. We assume no liability.